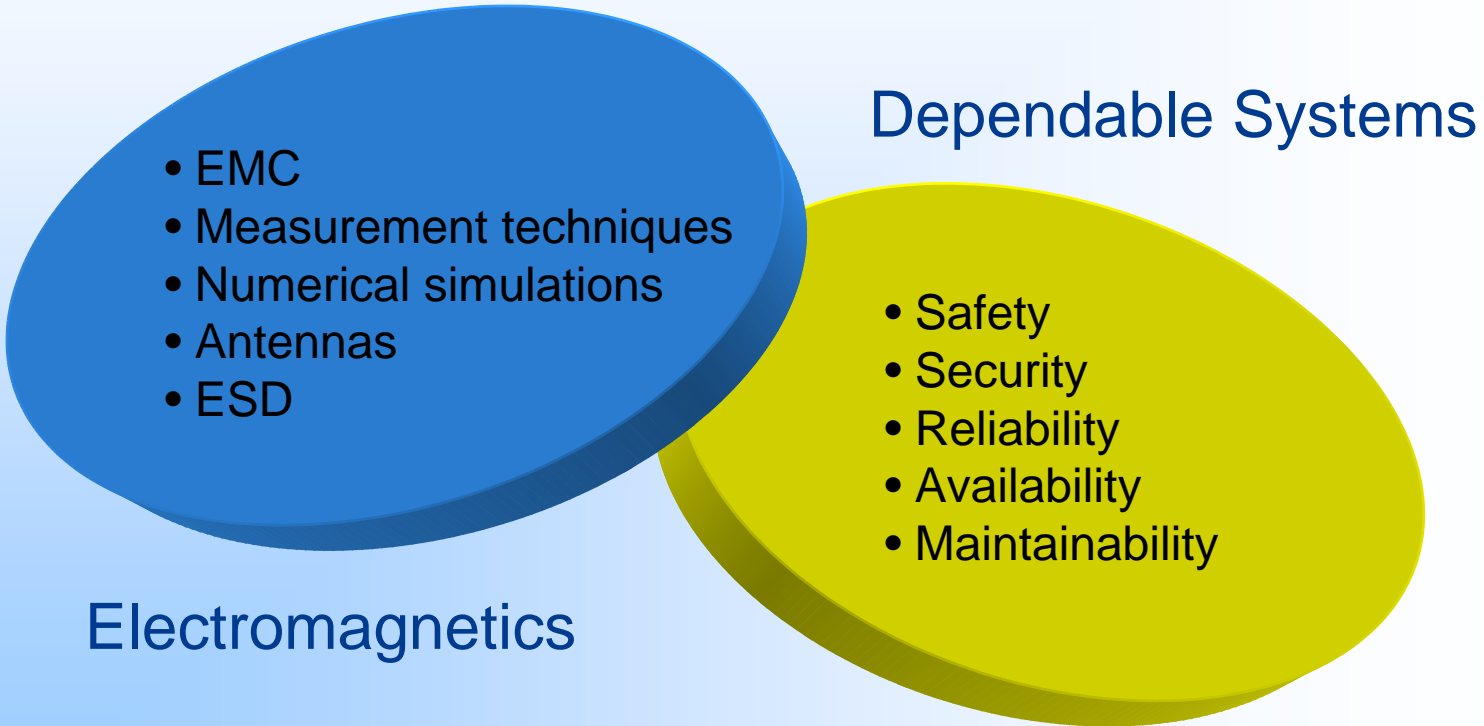


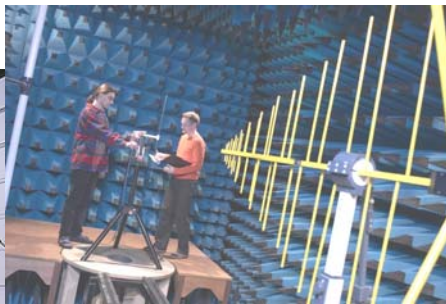
SP Electronics





Personnel

- 10 senior researchers
- 40 engineers (MSc + BSc)



Other

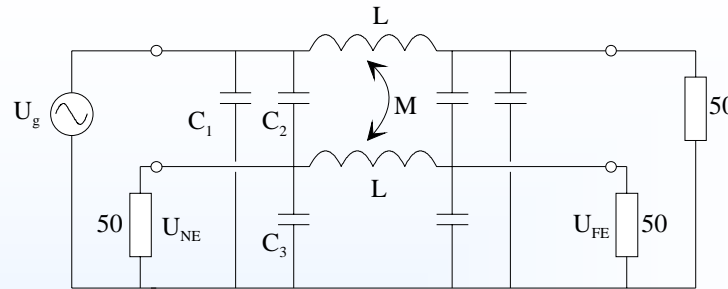
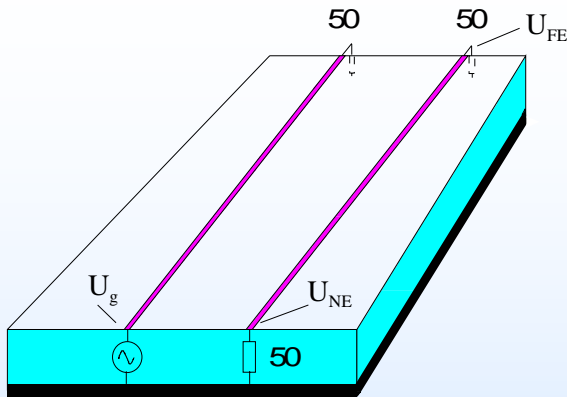
- extensive laboratory resources
- computer tools, own developed as well as commercial

Dependable Systems

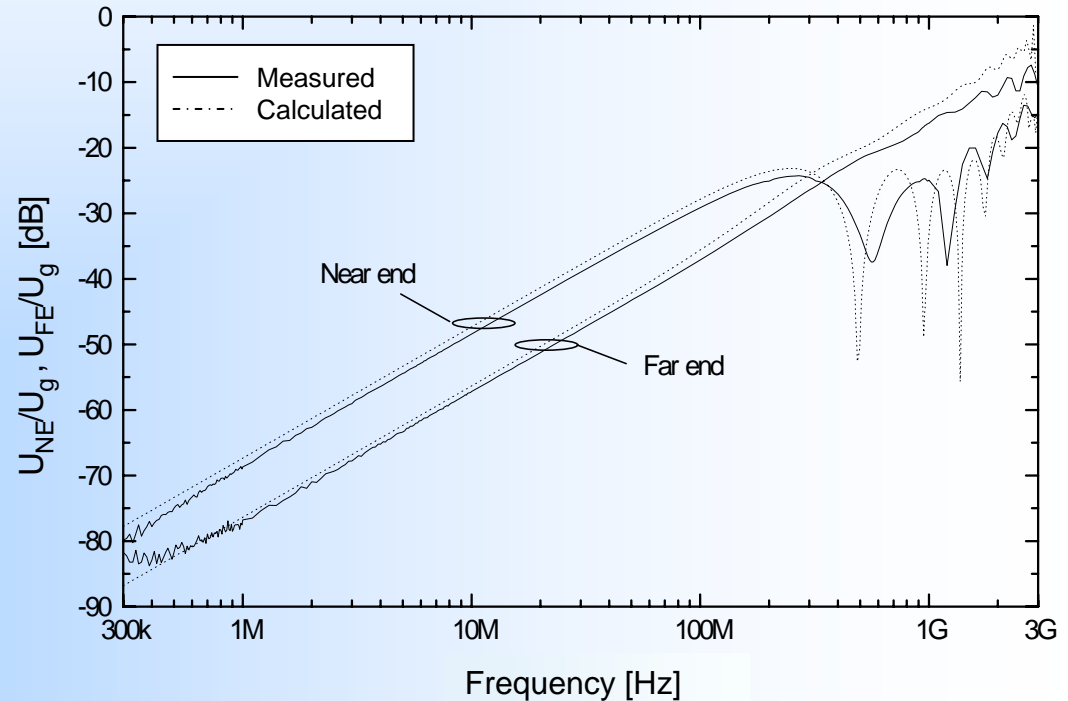
- EMC
- Measurement techniques
- Numerical simulations
- Antennas
- ESD

Electromagnetics

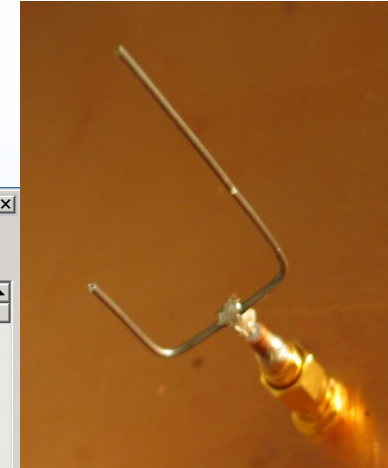
EMC – Electromagnetic Compatibility



- Simulation
- Construction
- Guidance
- Testing



- Design
- Measurement
- Simulation
- Calibration



Wire-MoM - C:\Program\Wire-MoM\Projects\DualBand-MonoPol\Ant.wip

File Wires Options Pages Help

Structure and excitation

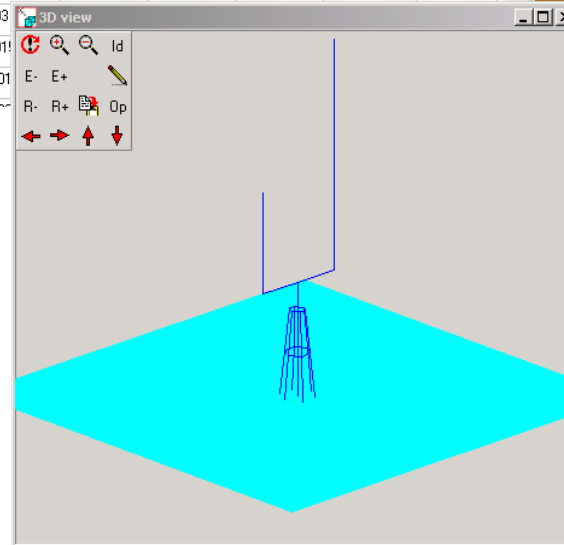
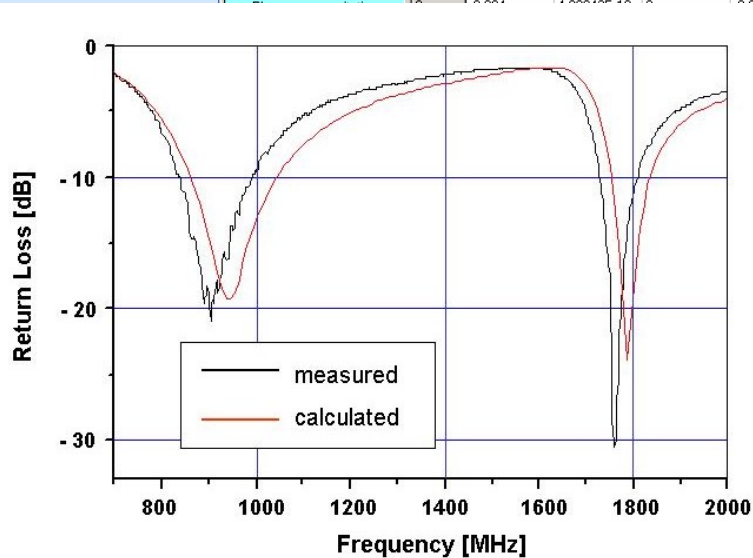
Wire structure

Voltage sources

Loading

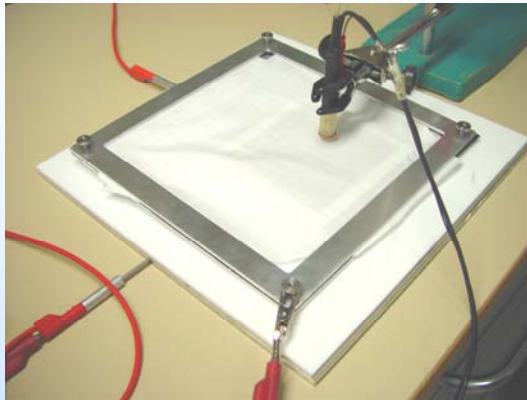
Wire structure coordinates

Wire id.	x1 [m]	y1 [m]	z1 [m]	x2 [m]	y2 [m]	z2 [m]	Radius [m]	No. basis	Tag
1	0	0	0.025	0.011	0	0.025	0.0013	3	Stöd
2	0	0	0.025	-0.011	0	0.025	0.0013	3	Stöd
3	-0.011	0	0.025	-0.011	0	0.077	0.0013	7	Ant 900
4	0.011	0	0.025	0.011	0	0.048	0.0013	6	Ant 1800
5	0	0	0	0	0	0.025	0.0013	5	Stöd
6	0.004	0	0	0.003					
7	0.002	0.0034641	0	0.001					
8	-0.002	0.0034641	0	-0.001					

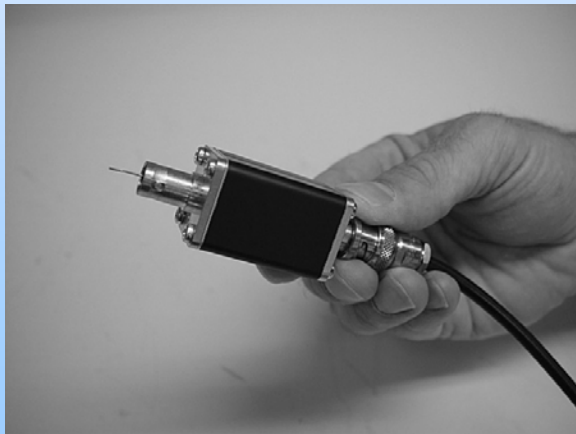


ESD – Electrostatic Discharge

Discharge, potential and E-field measurements in combination with modelling



Quasi static electrical shielding



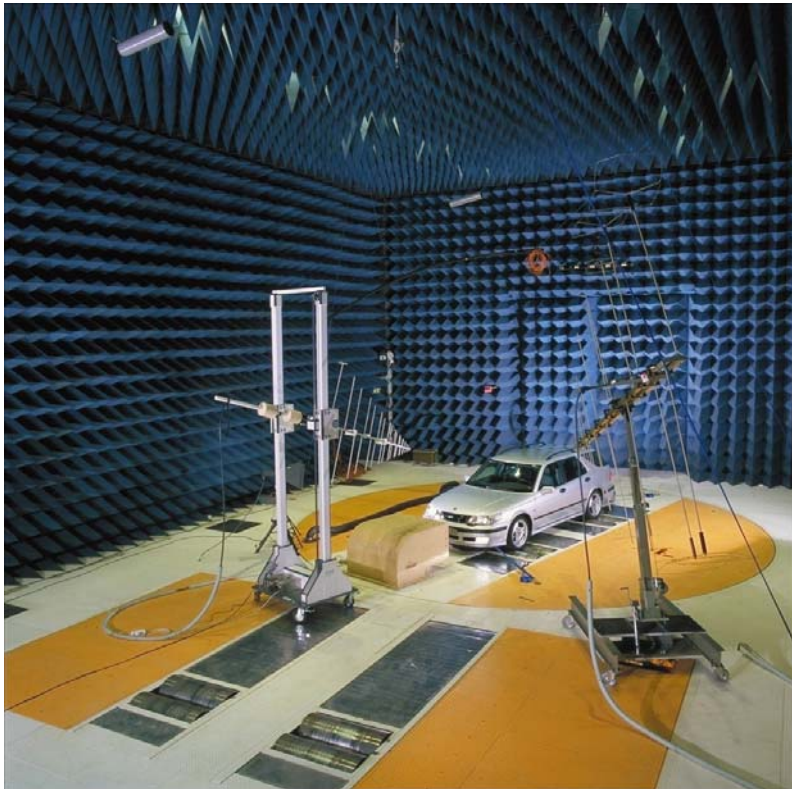
Direct discharge measurements



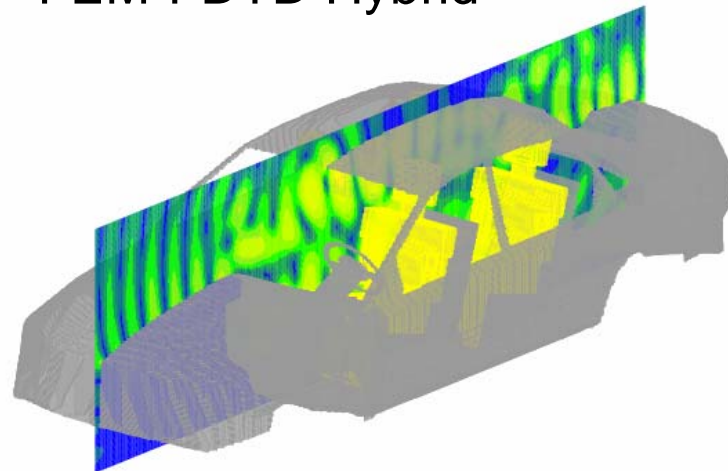
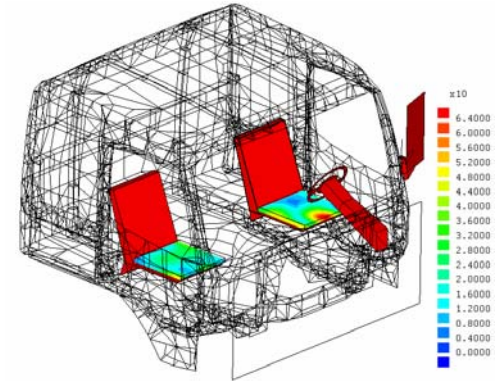
ESD protective garment with indicated measurements paths

Simulations

Numerical simulations using commercial and own-developed software



- FDTD
- FEM
- MoM
- FEM-FDTD Hybrid



Measurement Techniques

- Anechoic Chamber
- mm-Waves
- Reverberation Chamber

